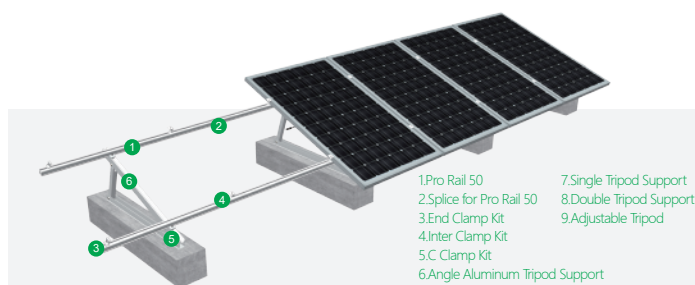
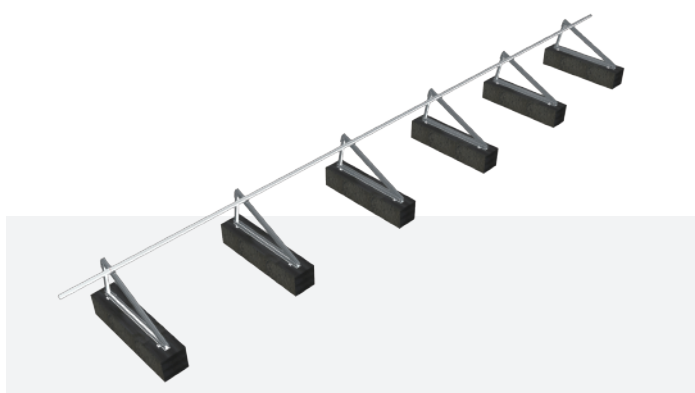


Overview

MRac Roof Solar PV Mounting System Matrix II is derived from RM I to meet different roof projects demands. Solar modules can be arranged with single or double rows of landscape or portrait orientation. Quick installation and stable structure are assured by the modular Patented design.

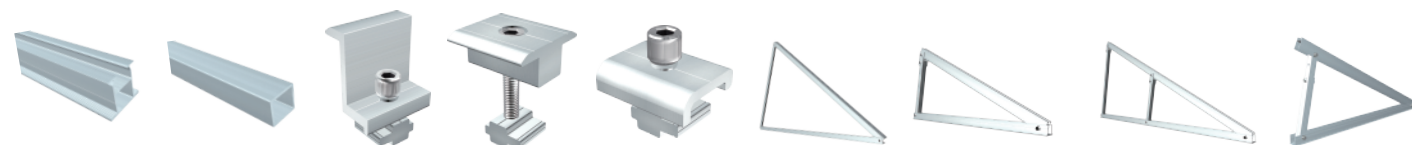

Mounting Structure
Features


- **System Compatibility**
Components mostly pre-assembled in factory to assure quick and reliable installation on site. Suitable for different flat rooftop, and compatible to different types of solar modules.
- **Unique Mudsill Design**
The mudsill can be fixed to flat roof or pitched roof with concrete foundation or steel foundation.
- **Solar Module Layout Flexibility**
Both landscape and portrait solar module layout are suitable. Both single row and double rows layout can be achieved, separately or combined
- **Adjustability**
Tilt angle can be adjustable

Technical Parameter

System Name	MRac RMII	Design Standard	AS/NZS 1170 , DIN 1055 , JIS C 8955 : 2017,
Installation Site	Flat Roof, Pitched Roof		International Building Code IBC 2009
Roof Type	Concrete Roof, Metal Roof		California Building Code CBC 2010
Tilt Angle	0-60°	Material	Al6005-T5(Anodized)
Wind Load	60m/s	Fastener	SUS304 & Zinc-Nickel Alloy Electroplated Steel
Snow Load	1.6KN/m ²	Small Components	Al6005-T5(Anodized)
Applicable Solar Module	Framed or Frameless	Color	Silver or Customized
Panel Layout	Portrait or Landscape	Warranty	10-Year Warranty

Certified by TUV, SGS and qualified consultants in AU, JP, ASEAN, CN, UK, EU, US


Component List


Pro Rail 50

Spec : 43*50*L
3100/4100/5100mm

Splice for Pro Rail 50

Length : 260mm
Hexa Self-Tapping Screw
ST6.3*19

End Clamp Kit

End Clamp
Cross Module
Spring Washer M8
Hex Socket Head Bolt

Inter Clamp Kit

Inter Clamp
Cross Module
Spring Washer M8
Hex Socket Head Bolt

C Clamp Kit

C Clamp
Cross Module
Spring Washer M8
Hex Socket Head Bolt

Angle Aluminum Tripod Support

Spec : Angle Aluminum A/B/C
Washer M8, Spring Washer M8
Hex Socket Head Bolt, Hex Nut

Single Tripod Support

Spec : Tripod Beam 60
35.4*35.4 Tube
Mudsill H49, U Gasket
Washer M10,
Spring Washer M10
Hex Bolt M10, Hex Nut M10

Double Tripod Support

Spec : Tripod Beam 60
35.4*35.4 Tube A/B
Mudsill H49, U Gasket
Washer M10
Spring Washer M10
Hex Bolt M10, Hex Nut M10

Adjustable Tripod

Spec : Tripod Beam 60,
Mudsill H49
40*40 Tube, 35.4*35.4 Tube
Washer M10
Spring Washer M10
Hex Bolt M10, Hex Nut M10