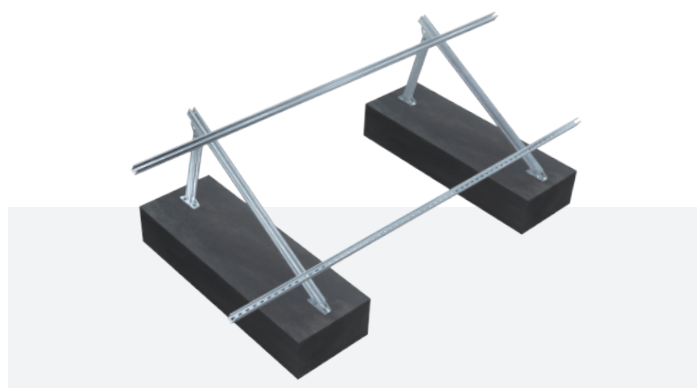


Overview

MRac Roof Solar PV Mounting System Matrix III is applied to various kinds of flat roof projects. Main components are made of hot-dip galvanized steel, with good performance of structure strength, stability and anti-corrosion, compatible with varied solar modules. Patented structure design guarantee quick installation to save construction cost.


Mounting Structure
Features

System Compatibility

Components mostly pre-assembled in factory to assure quick and reliable installation on site. Suitable for different flat rooftop, and compatible to different types of solar modules.

Cost Efficiency

Hot-dip galvanized steel assures the structure strength and lower cost for large-scale installation

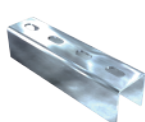
Technical Parameter

System Name	MRac RMIII	Design Standard	AS/NZS 1170 , DIN 1055 , JIS C 8955 : 2017,
Installation Site	Flat Roof, Open Land		International Building Code IBC 2009
Foundation	Concrete Foundation		California Building Code CBC 2010
Tilt Angle	0-60°	Material	Q235B(Hot-dip galvanized)
Wind Load	60m/s	Fastener	Zinc-Nickel Alloy Electroplated Steel & Q235B
Snow Load	1.6KN/M2	Small Components	Al6005-T5(Anodized)
Applicable Solar Module	Framed or Frameless	Color	Silver or Customized
Panel Layout	Portrait or Landscape	Warranty	10-Year Warranty

Certified by TUV, SGS and qualified consultants in AU, JP, ASEAN, CN, UK, EU, US


Component List


Beam
Q235B(Hot-dip galvanized)



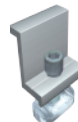
Beam Connector
Spec : L200
Q235B(Hot-dip galvanized)



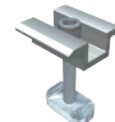
Back Support
Material : Q235B
(Hot-dip galvanized)



Inclined Support
Q235B(Hot-dip galvanized)



Diamond End Clamp Kit
End Clamp
Rhombus Nut M8
Spring Washer M8
Hex Socket Head Bolt



Diamond U20 Inter Clamp Kit
Inter Clamp
Rhombus Nut M8
Spring Washer M8
Hex Socket Head Bolt



Triangle Jointer
Spec : L150